



'Spitfire' Stage 1 Installation Instructions

Author	Chris Horton
Date	19-04-2015
Issue	01
Approved	TG

Contents

Contents	1
Introduction.....	1
Tools Required	2
Kit Contents	2
Kit Installation: Exhausts.....	3
Kit Installation: Air filter cover	11

Introduction

The Garage 56 'Spitfire' Stage 1 Kit has been developed to enhance the performance and enjoyment of the Morgan 3 Wheeler. The instructions below should enable installation with the minimum of fuss. We hope you enjoy the kit.

Tools Required

The Stage 1 kit can be installed using the following metric tools:

- Spanners (10mm, 13mm, 17mm)
- Allen key set (3mm, 4mm)
- Flat screwdriver

A socket set is useful, but not essential, for fitment.

Kit Contents

Description	# Off
COVER - AIR FILTER - MORGAN - FABRICATED	1
EXHAUST, ROLLED, LH	1
HEATSHIELD, MK2, SILENCER MK3, LH	1
EXHAUST, ROLLED, RH	1
HEATSHIELD, MK2, SILENCER MK3, RH	1
SCREW SOCKET BTHD ST/ST M8-1.25 x 10	12
EXHAUST BRACKET FR	2
EXHAUST BRACKET RR	2
GASKET - EXHAUST BRACKET	4
SCREW SOCKET BTHD ST/ST M8-1.25 x 20	12
WASHER FORM C M8 ST/ST	12

Kit Installation: Exhausts



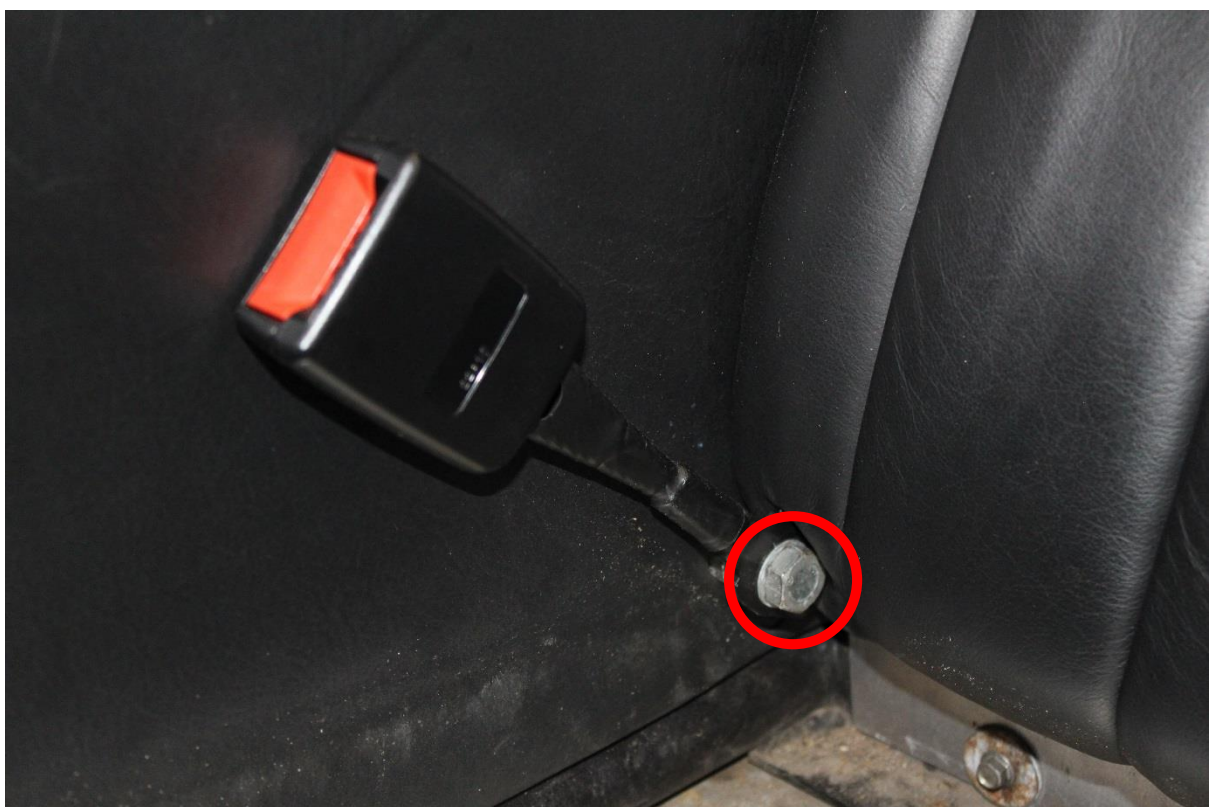
- Remove 11 off screws, 3 of which are highlighted above (3mm hex bit)
- Remove rear boot tray



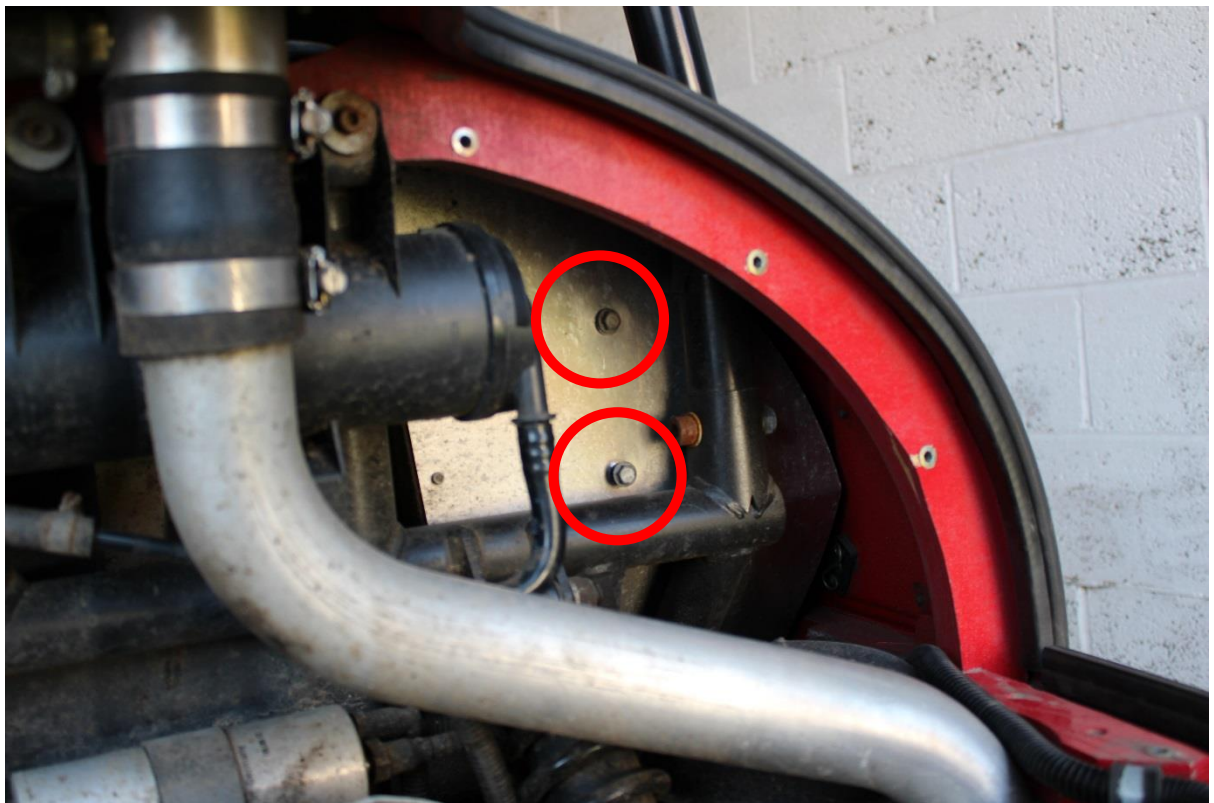
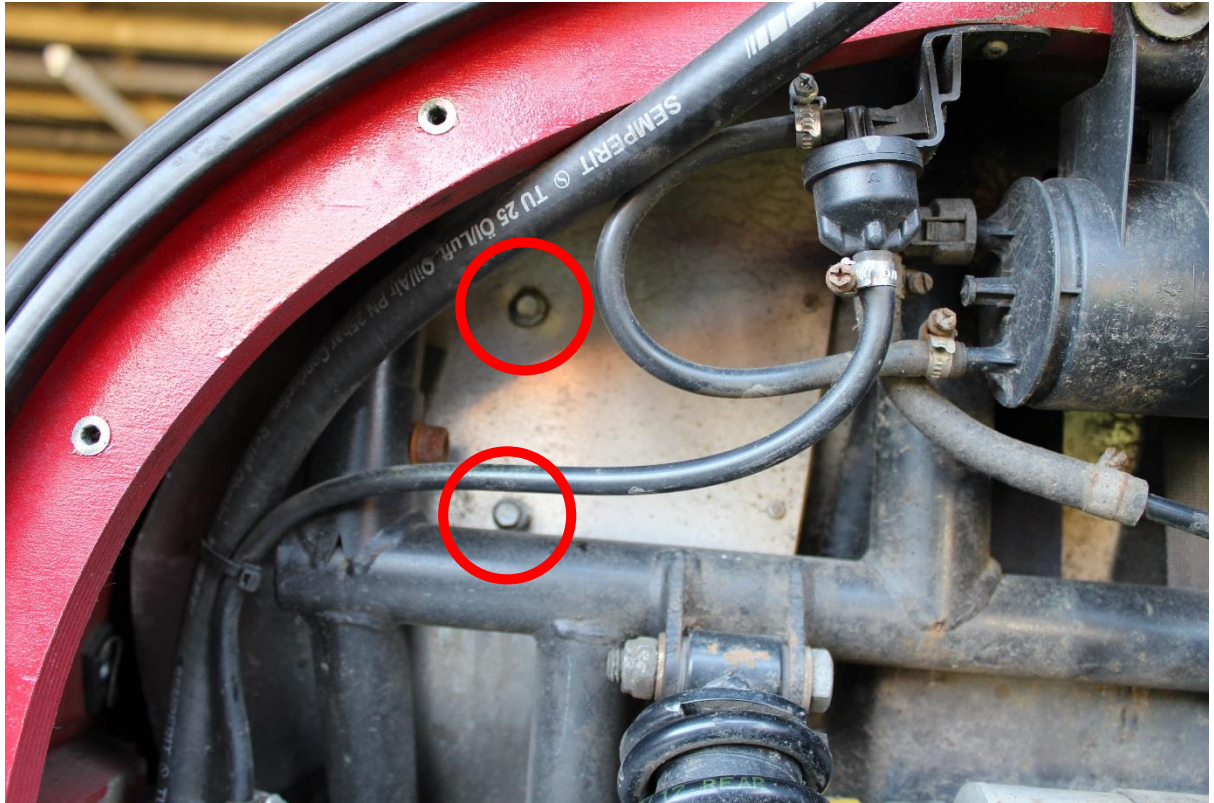
- Remove seat bases



- Remove caps on seatbelt buckle, gently prising off using a flat screwdriver (LH /RH)



- Remove buckle bolts (LH / RH) & buckles (17mm socket)



- Remove 4 screws in seat backrest (10mm socket)



- Remove lower rear rest (ease out from lower edge, careful not to bend brackets)



- Remove upper rear seat rest

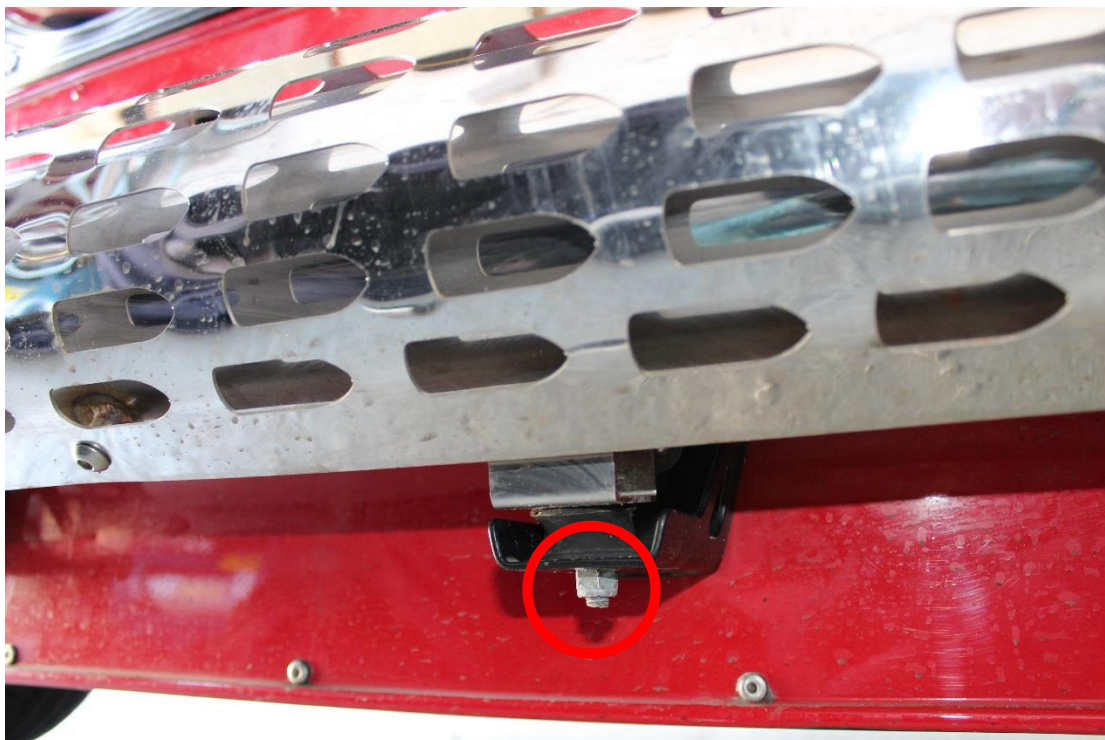
On both sides:



- Remove 4 side panel screws (3mm allen key)
- Remove side panel



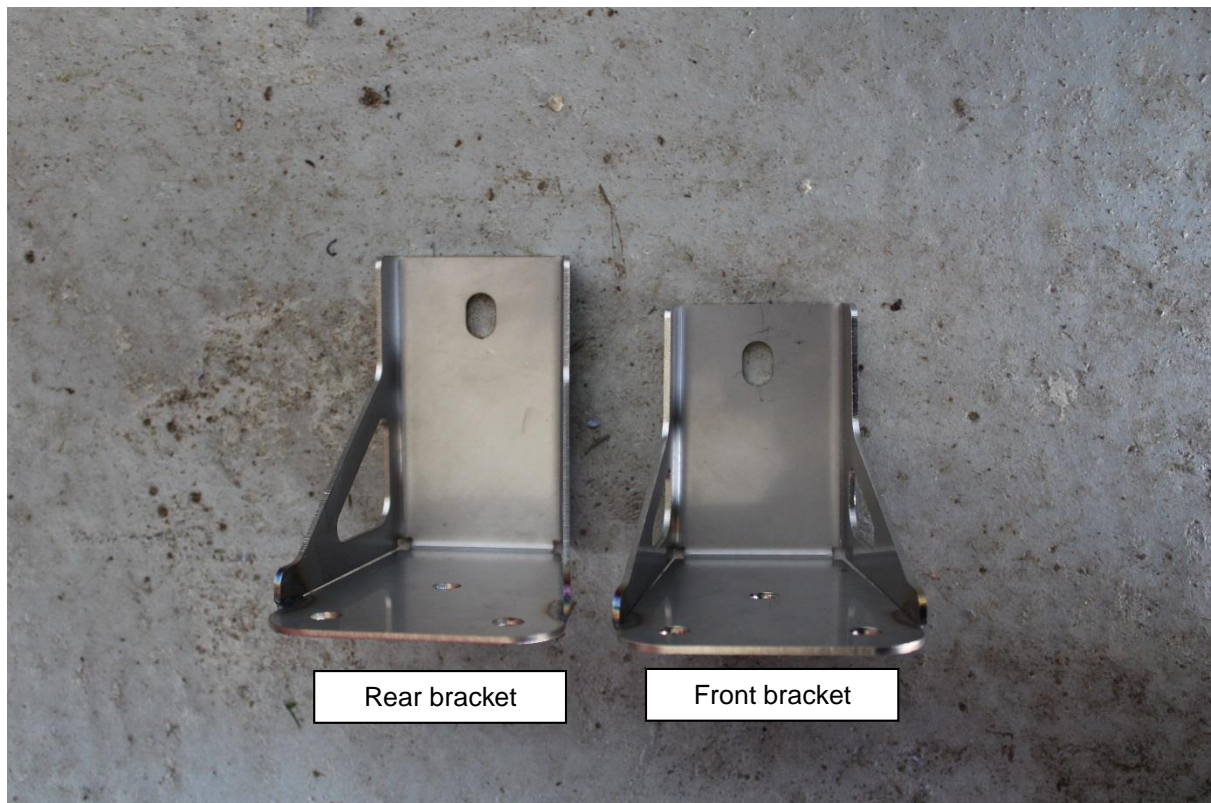
- Undo exhaust clamp (10mm spanner)



- Slacken bobbin upper nut (13mm spanner) & undo bobbin lower nut (13mm spanner)
- Remove bobbins from exhaust (note washer locations)



- Remove bracket nuts 3off (13mm spanner) & bracket (1x front and 1 x rear brackets)



- Fit Stage 1 front bracket (shorter base, shown on right in top image), gasket and 3 off M8 x 20 Button Head, with additional washer under head (5mm allen key). Re-use original nut and washer on inside (13mm spanner).
- Repeat for Stage 1 rear bracket (longer base).



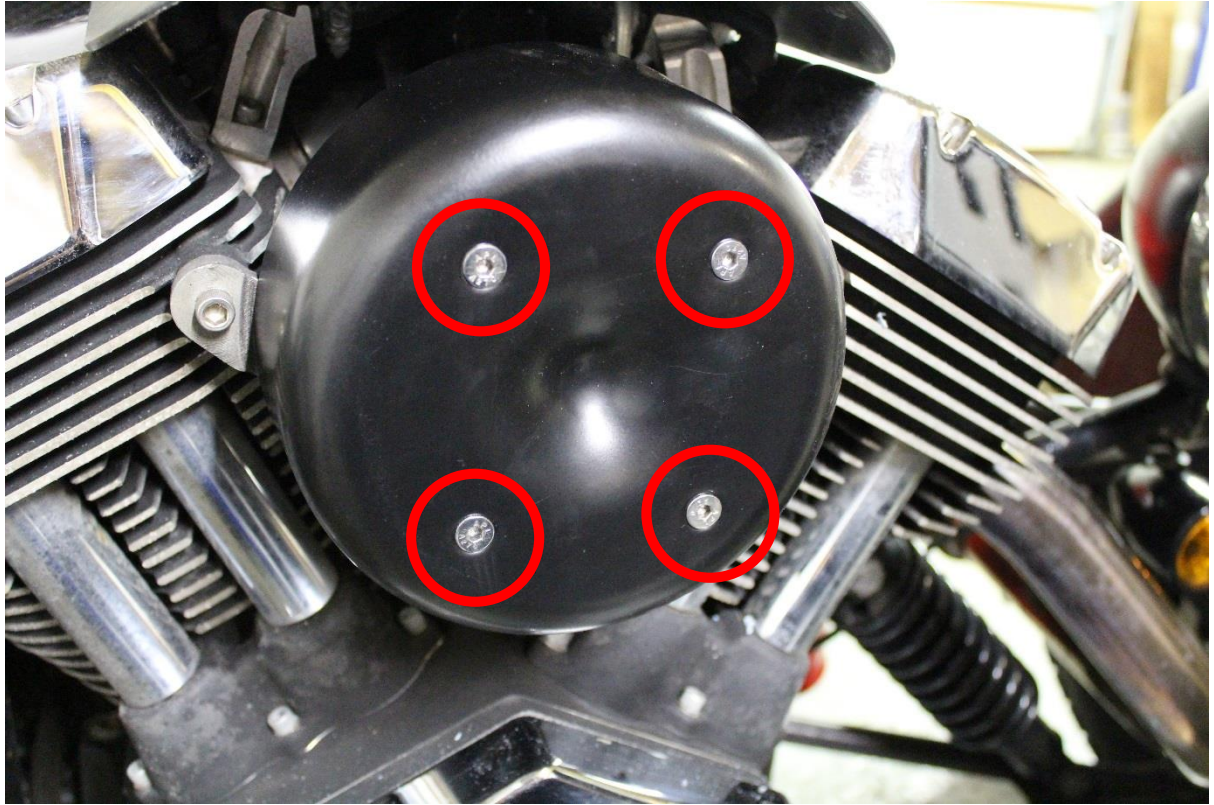
- Loosely fit exhaust bobbins to exhaust (NB brackets designed for newer long bobbins shown on left above) with plain nut, spring washer and standard washer. Note that long bobbins use M8 (metric) fasteners, whereas the older bobbins use 5/15UNF fasteners.
- Mount exhaust on car.
- Refit bobbin lower nuts and tighten.
- Tighten bobbin upper nuts, minimising any twist or offset in the bobbin.
- Tighten exhaust clamp
- Refit side panel and screws.

Note that the exhaust header nuts (connection to engine, 13mm short socket) can be slackened to vary angle and fit of exhausts if required. Ensure nuts are re-tightened and tab washer is bent back in to locking position.

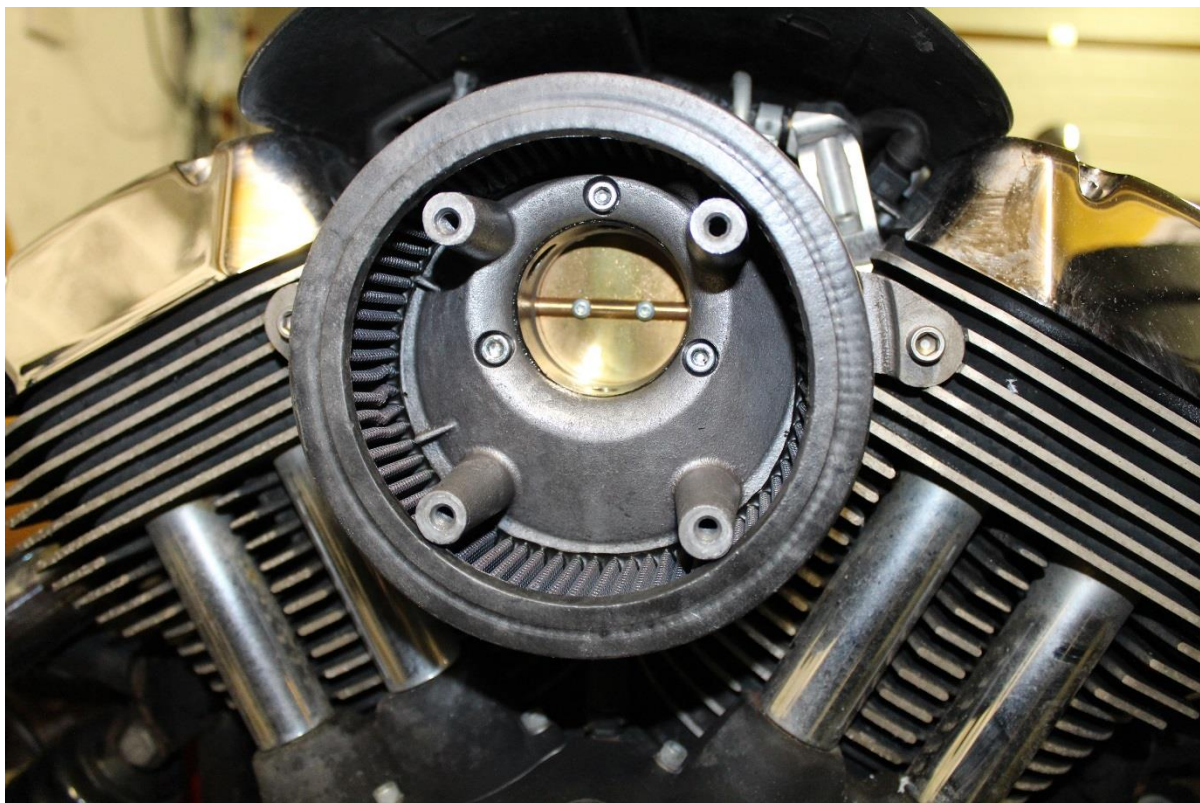
Once both exhausts are fitted:

- Refit upper seat rest
- Refit lower seat rest
- Refit rear seat rest bolts
- Refit seat belt buckles
- Refit seat bases
- Refit rear boot tray and fixings

Kit Installation: Air filter cover



- Remove screws 4off (4mm allen key)



- Check air filter is seated correctly on backplate



- Fit Stage 1 air filter cover re-using screw
- Check air filter is secure behind cover